

2017 ANNUAL REPORT



PROGRAMS & SERVICES

In-Home Care | Social Services | Affordable Housing
Citizenship & Immigration | Benefit Enrollment Center
Community & Behavior Health Center
Domestic Violence Advocacy & Shelter

2017 was a year of sustainable growth, accomplished by holding strong to the KWA mission and vision established some four decades ago.

“The best part of my job is witnessing the joy and caring that goes into every single action taken at KWA. Our staff works tirelessly to understand the people we serve, both from a needs standpoint and a cultural perspective.”

Troy Christensen,
KWA Executive Director



INFRASTRUCTURE

IN JANUARY, KWA expanded its infrastructure to establish a fully staffed department to manage and grow our ongoing development and communications strategies.

MOBILITY

IN MARCH, we increased mobility for seniors with the purchase of a 12-passenger van to provide transportation to and from programs.

CELEBRATION

IN OCTOBER, we celebrated our 45th Anniversary along with more than 600 supporters and guests at the Tacoma Convention Center. Sharing messages in honor of the occasion were: Washington State Lieutenant Governor Cyrus Habib, Attorney General Bob Ferguson, and Mayor of Tacoma and long time supporter of KWA, Maryland Strickland.

“As we move into the future, we do so with an eye on the dreams of our founders, and with commitment to continue the work in our communities which began in 1972.”

Grace Kim,
Chair, KWA Board of Trustees

EXPANSION

IN DECEMBER, we expanded to Sequim, Washington where we hosted a ribbon cutting for our 6-bedroom home to support individuals with developmental disabilities, who would not otherwise live independently.

The Road We Walk Together...

... begins with our mission to provide multi-cultural, multi-lingual human services to the diverse communities in Western Washington through education, socialization, advocacy, and support.

2017 STATS



11

Counties Served



31,639

Senior Meals Served



127

Citizens Naturalized



2,235

In-Home Care
Clients Served



126

Domestic Violence
Clients Served



25

Languages
Spoken

When Thao came to us in early 2017, she was anxious, alone, and afraid. She found a safe haven in our WAF Home. And, with compassionate guidance from a KWA advocate, Thao was able to break away from her abusive marriage. Since then, she has found her own voice and has taken charge of her own future. Today, Thao is a manager at a popular restaurant and is attending community college.



THE DIFFERENCE A YEAR MAKES

“I am very confident now. I believe in life.”

FINANCIAL Snapshot

Under KWA's fiduciary management, operation reserves could cover the equivalent of 110 days of operations.

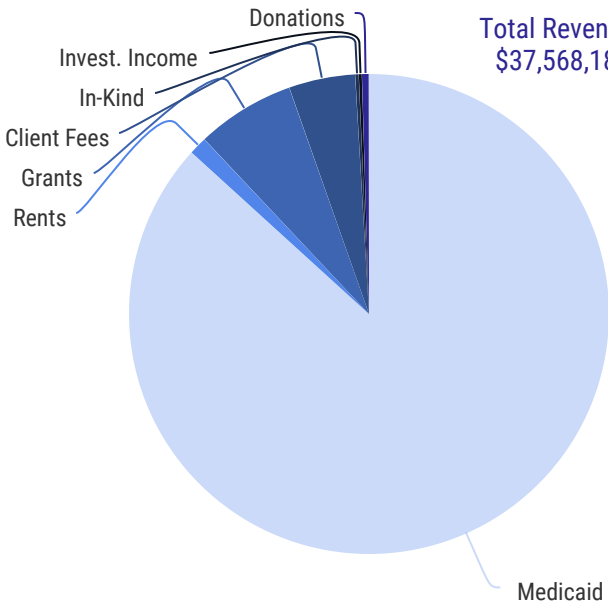
REVENUE GROWTH PAST 5 YEARS



Revenue

Medicaid	\$32,590,811
Rents	459,374
Grants	2,495,846
Client Fees	1,676,291
In-Kind	92,700
Investment Income	80,042
Donations	173,121

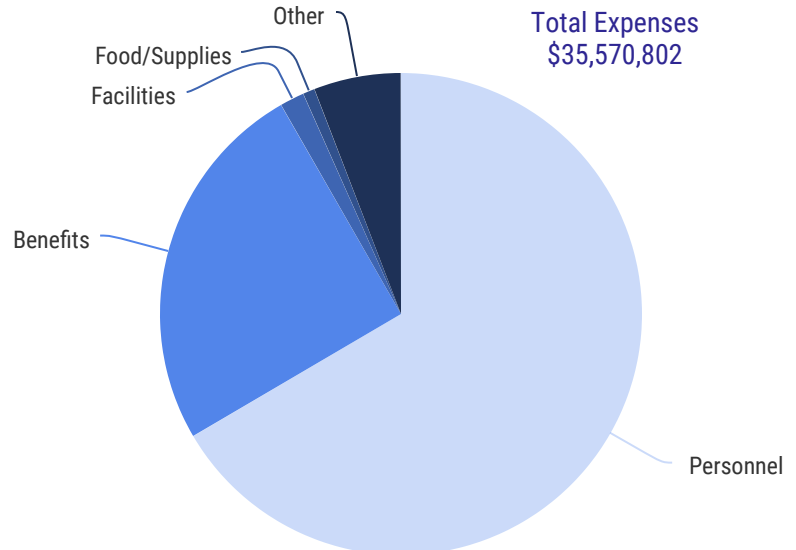
Total Revenue
\$37,568,185



Expenses

Personnel	\$23,676,331
Benefits	8,948,600
Facilities	581,259
Food/Supplies	284,131
Other	2,080,481

Total Expenses
\$35,570,802



FINANCIAL Supporters

Bamford Foundation
Ben B. Cheney Foundation
Fuchs Foundation
Key Bank Foundation
Kilworth Foundation
Milgard Foundation
Multicare Foundation
New York Life Foundation

Building Changes
One America
Puget Sound Energy
City of Lynnwood
City of Seattle
City of Tacoma
United Way of Pierce Cnty
Verdant Health

National Asian Pacific Center on Aging
Pierce County
WA State DSHS
WA State Department of Commerce
WA State Office of Insurance Commissioner
US Dept. of Housing and Urban Development
Washington Health Exchange

2017 marked the 45th Anniversary of Korean Women's Association. KWA extends heartfelt thanks to all the supporters who helped make our celebration so special. We applaud the love and labor from our board, administrative staff and employees for the many hours involved to create the special evening shared with so many.



BOARD OF TRUSTEES

Grace Kim, Board Chair
Eunsung Kelly Liu, Vice Chair
Amy Park, Secretary
Young Sil Jaqua, Treasurer

Kyong Suk Arbeeny,
Volunteer Committee Chair

Dori Synn, Community Secretary

Sulja Warnick, Senior Advisor

Board of Trustees

Sugin Crow
Ki Yul McDonald
Pia Hong Seeger
Grace Park
Theresa Pan Hosley
Teresa Maxwell
Yoni Yi
Angela Lee Hylton
Sandra Eliason
Kyung C. Jung

Emeritus

Oksun Wilson
Chong Dameron
Agnes Park
Jennie Lee

Ex-officio

Troy Christensen,
Executive Director



Korean Women's Association

123 E. 96th Street
Tacoma, WA 98445

888-508-2780

info@kwacares.org
kwacares.org